

RATIONALE

"INACTIVE" REPLACED BY "NOT RECOMMENDED." CLASSES 3A AND 3B ADDED TO TABLE 1 HEADING FOR THE THREADS. MATERIAL CODE LETTER R, CRES 321, INTRODUCED AS AN OPTIONAL MATERIAL. FINISH FOR MATERIAL CODE LETTER R BEING INTRODUCED. PROCUREMENT SPECIFICATION NOTE UPDATED TO CURRENT QML VERBIAGE. NOTE /8/ UPDATED SPECIFYING THAT PORT #1 IS EQUAL TO OR GREATER THAN PORT #2. UPDATED SPECIFICATION CALLOUT FROM MIL-A-8625 TO MIL-PRF-8625. NOTE /17/ REVISED TO REFLECT OPTIONAL DRY FILM CODE LETTER N CALLOUT FOR SWIVEL NUT. NEW USAGE RECOMMENDATION FOR MATERIAL 347 ADDED TO NOTE /18/.

REV.  
C

AS4411™

SAE Executive Standards Committee Rules provide that: "This report is published by SAE to advance the state of technical and engineering sciences. The use of this report is entirely voluntary, and its applicability and suitability for any particular use, including any patent infringement arising therefrom, is the sole responsibility of the user." SAE reviews each technical report at least every five years at which time it may be revised, reaffirmed, stabilized, or cancelled. SAE invites your written comments and suggestions.

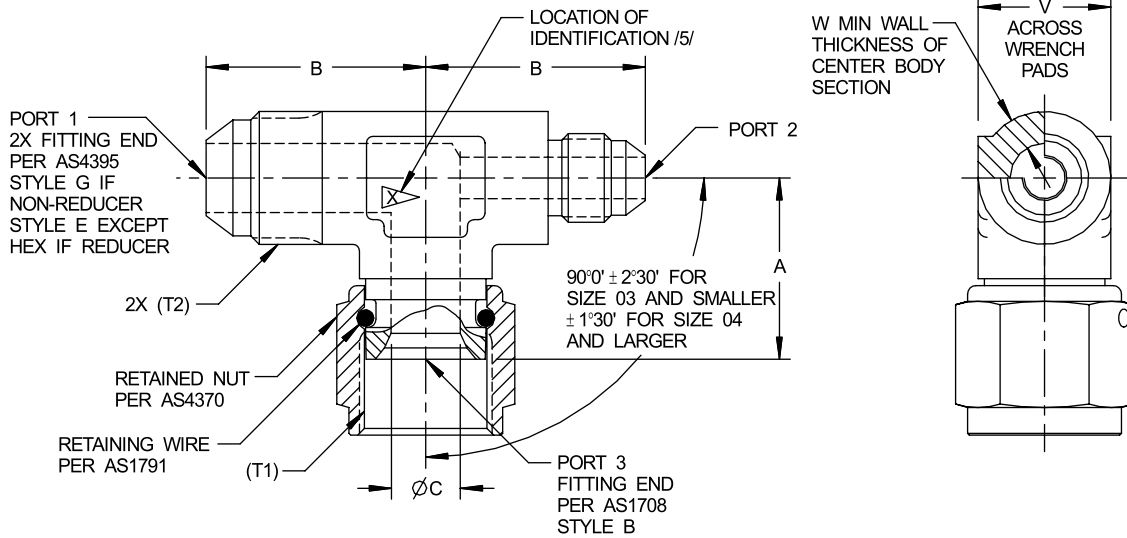


FIGURE 1 - FITTING ASSEMBLY, TEE

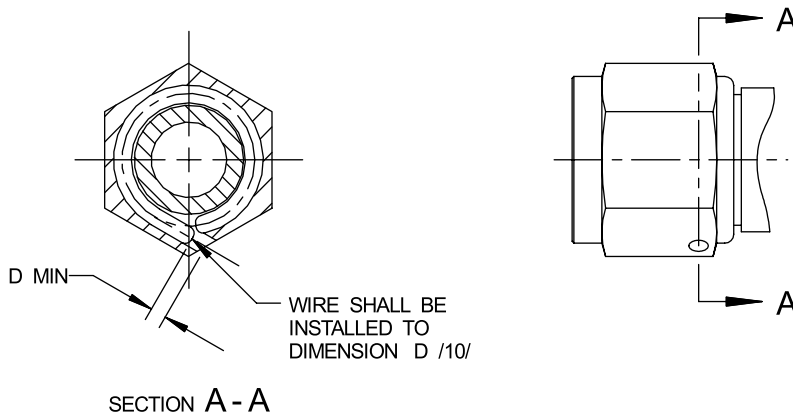
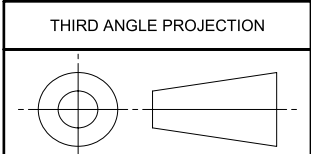


FIGURE 2 - INSTALLATION, RETAINED NUT AND RETAINING WIRE

NOT RECOMMENDED IN PART /18/

For more information on this standard, visit  
<https://www.sae.org/standards/content/AS4411C/>



CUSTODIAN: G-3/G-3B

PROCUREMENT SPECIFICATION: AS4841 /4/



**AEROSPACE STANDARD**  
FITTING ASSEMBLY, TEE, REDUCER AND  
NONREDUCER, INTERNAL FLARE ON SIDE  
TO FLARED TUBE

AS4411™  
SHEET 1 OF 6

REV.  
C

ISSUED 1995-03 REAFFIRMED 2007-10 REVISED 2023-03

**TABLE 1 - DIMENSIONS C-W AND WEIGHTS**

BASIC NO. AS4411 /17/ SIZE CODE	(NOMINAL TUBE SIZE)	T1, T2 THREAD PER AS8879 CLASS 3B, 3A	C	D	V	W	LB/EA APPROX REF ALUM	LB/EA APPROX REF CRES	LB/EA APPROX REF TI
02	.125	.3125-24 UNJF	.058- .065	.045	.297- .314	.090	.022	.063	.036
03	.188	.3750-24 UNJF	.121- .128	.045	.360- .377	.100	.028	.081	.046
04	.250	.4375-20 UNJF	.168- .175	.045	.423- .440	.110	.036	.105	.060
05	.312	.5000-20 UNJF	.230- .237	.045	.485- .502	.120	.045	.132	.076
06	.375	.5625-18 UNJF	.293- .301	.045	.547- .565	.120	.061	.177	.101
08	.500	.7500-16 UNJF	.387- .395	.055	.735- .753	.150	.113	.327	.187
10	.625	.8750-14 UNJF	.480- .488	.063	.860- .878	.170	.155	.449	.257
12	.750	1.0625-12 UNJ	.604- .614	.095	1.047-1.065	.185	.280	.814	.466
16	1.000	1.3125-12 UNJ	.839- .851	.125	1.292-1.317	.205	.407	1.180	.676
20	1.250	1.6250-12 UNJ	1.073-1.086	.155	1.605-1.630	.240	.748	2.170	1.243
24	1.500	1.8750-12 UNJ	1.307-1.320	.180	1.855-1.880	.250	.996	2.890	1.655
32	2.000	2.5000-12 UNJ	1.776-1.791	.180	2.542-2.572	.350	1.302	3.780	2.165

**TABLE 2 - LEG LENGTH A**

SIZE OF PORT #3	FORG. SIZE /8/ 02	FORG. SIZE /8/ 03	FORG. SIZE /8/ 04	FORG. SIZE /8/ 05	FORG. SIZE /8/ 06	FORG. SIZE /8/ 08	FORG. SIZE /8/ 10	FORG. SIZE /8/ 12	FORG. SIZE /8/ 16	FORG. SIZE /8/ 20	FORG. SIZE /8/ 24	FORG. SIZE /8/ 32
02	.658	.686	.743	.767	.884	.924	1.100	1.157	1.268	1.521	1.521	2.031
03	--	.672	.555	.587	.649	.743	.838	.931	1.056	1.213	1.338	2.015
04	--	--	.602	.633	.695	.789	.883	.976	1.101	1.258	1.383	1.890
05	--	--	--	.675	.737	.831	.925	1.018	1.143	1.300	1.425	1.937
06	--	--	--	--	.821	.915	1.009	1.102	1.227	1.384	1.509	1.968
08	--	--	--	--	--	1.023	1.117	1.210	1.334	1.491	1.616	2.130
10	--	--	--	--	--	--	1.167	1.260	1.383	1.540	1.665	2.098
12	--	--	--	--	--	--	--	1.224	1.348	1.505	1.630	2.098
16	--	--	--	--	--	--	--	--	1.387	1.524	1.649	2.150
20	--	--	--	--	--	--	--	--	--	1.571	1.696	2.243
24	--	--	--	--	--	--	--	--	--	--	1.776	2.286
32	--	--	--	--	--	--	--	--	--	--	--	2.442

**TABLE 3 - LEG LENGTH B**

SIZE OF PORT #1 OR #2	FORG. SIZE /8/ 02	FORG. SIZE /8/ 03	FORG. SIZE /8/ 04	FORG. SIZE /8/ 05	FORG. SIZE /8/ 06	FORG. SIZE /8/ 08	FORG. SIZE /8/ 10	FORG. SIZE /8/ 12	FORG. SIZE /8/ 16	FORG. SIZE /8/ 20	FORG. SIZE /8/ 24	FORG. SIZE /8/ 32
02	.757	.789	.789	.843	.946	1.033	1.135	1.232	1.341	1.544	1.685	2.169
03	--	.820	.811	.874	.977	1.064	1.166	1.263	1.372	1.575	1.716	2.200
04	--	--	.882	.945	1.048	1.135	1.237	1.334	1.443	1.646	1.787	2.271
05	--	--	--	.945	1.048	1.135	1.237	1.334	1.443	1.646	1.787	2.271
06	--	--	--	--	1.054	1.141	1.243	1.340	1.449	1.652	1.793	2.277
08	--	--	--	--	--	1.242	1.344	1.441	1.555	1.753	1.894	2.378
10	--	--	--	--	--	--	1.445	1.542	1.651	1.854	1.995	2.479
12	--	--	--	--	--	--	--	1.648	1.757	1.960	2.101	2.585
16	--	--	--	--	--	--	--	--	1.804	2.007	2.148	2.632
20	--	--	--	--	--	--	--	--	--	2.054	2.195	2.679
24	--	--	--	--	--	--	--	--	--	--	2.320	2.804
32	--	--	--	--	--	--	--	--	--	--	--	3.054